



# Product catalogue



**Smithfield.**

*Good food. Responsibly.®*



**Animex Foods** is a Polish food company, bringing meat specialties to the consumers in more than 60 countries on 6 continents. Our strength comes from the know-how and practices, which have been shaped for over 70 years.

As a leader in the meat industry we currently service retail, foodservice, and deli channels, paying special attention to perfect cooperation with our partners at all stages of our activity. Animex Foods, being a producer of excellent foods, is part of the global business of Smithfield group.

## **Smithfield** Polska

Smithfield Poland is a group of companies operating in Poland in the animal food production chain, controlling the production process "from farm to fork", with respect for our clients, consumers, suppliers, cooperating farmers and local communities.

Smithfield Poland is owned by Smithfield Foods, Inc., which is a wholly owned independent subsidiary of WH Group Limited. Together these companies form the largest pork producer in the world.

### **Smithfield Poland consists of:**

- Animex Foods – producer of pork, poultry and high quality processed products
- Agri Plus – conducting activity of the pig producer
- Agri Plus Feed – dealing with feed production

Smithfield Poland continuously monitors all aspects of its operations to ensure the safety and highest quality of its products, most of which originate from our own resources.

### **Animex' responsibility:**

When making business decisions, Animex Foods takes into account the future perspective. We take a long-term approach and analyse challenges that are soon to be faced not only by our business, but by the entire world.

When planning the development of our company, we distinguished 3 areas of our responsibility, within which:

- we thoroughly analyze the implemented activities,
- we measure the effects and impact,
- we define measurable goals for the future.

We did it to make sure that over the next decades our business will continue to develop and it will allow us to provide the constantly growing number of people with high-quality and safe products.



# We firmly believe that sustainably produced food is a right not a privilege.

## We are committed to:



Humane  
treatment  
of animals



Stewardship  
of the  
environment



Safe &  
high quality  
food



Vitality  
of local  
communities



Rewarding  
& safe work  
environment

## Sustainable development goals:



No  
hunger



Good  
health & quality  
of life



Good  
education  
quality



Clean  
water &  
sanitary



Clean  
& available  
energy



Economic  
growth & decent  
work



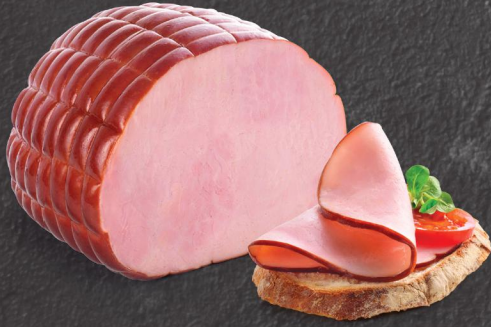
Responsible  
consumption &  
production



Actions  
in the climate  
area

# Smoked meat





Lithuanian Ham



PORK



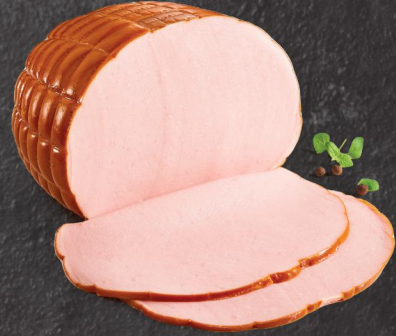
76%



VAC



ca. 1,5 kg



Lithuanian Turkey Ham



TURKEY



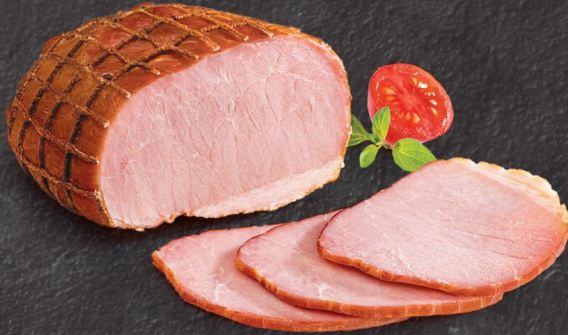
59%



VAC



ca. 2,4 kg



Delicate Ham



PORK



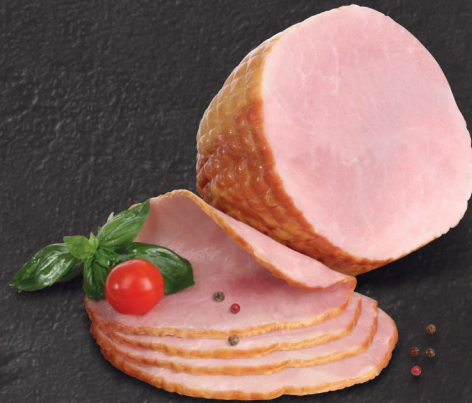
70%



VAC



ca. 500 g



Banquet Ham



PORK



82%



VAC



ca. 4 kg



Morliny Ham



PORK



80%



VAC-ROLL



ca. 500 g/  
ca. 1 kg



Brother-in-law's Ham



PORK



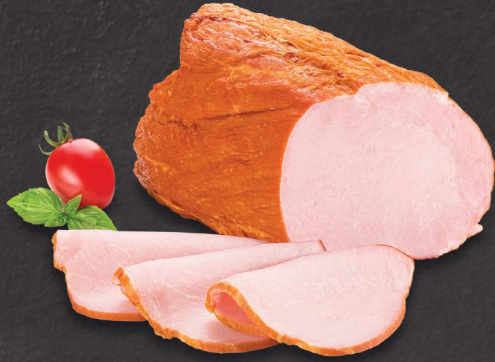
100 g of pork  
meat/ 100 g



VAC



ca. 500 g/ ca. 1 kg/  
ca. 3 kg



**Sopocka Loin**



PORK



66%



VAC-ROLL



ca. 700 g



**Sopocka Extra Loin**



PORK



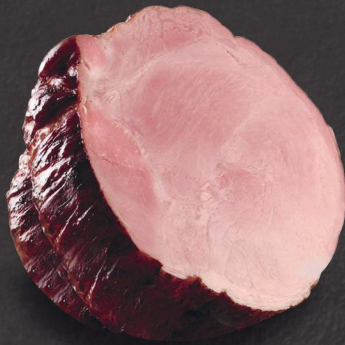
60%



VAC



ca. 500 g/  
1/2 pcs - ca. 1,2 kg



**Dark Smoked Ham**



PORK



70%



VAC



ca. 3 kg



**Roasted Turkey Breast**



TURKEY



76%



VAC



ca. 1,2 - 1,8 kg



**Masurian Smoked Meat**



PORK



83%



MAP



ca. 3 kg



**Smoked Chicken Drumstick**



CHICKEN



94%



MAP  
VAC



ca. 300 g - ca. 1 kg



**Smoked Chicken Quarter**



CHICKEN



95%



MAP  
VAC



ca. 300 g/  
ca. 600 g/ ca. 1 kg



**Smoked Chicken Wings**



CHICKEN



95%



MAP  
VAC



ca. 300 g/  
ca. 500 g/ ca. 1 kg



**Smoked Chicken Leg**



CHICKEN



94%



MAP  
VAC



ca. 300 g/  
ca. 1 kg



**Smoked Cooked Rib Stripes**



PORK



106%



MAP



ca. 1 kg



**Smoked Cooked Rib Brisket**



PORK



106%



MAP



ca. 1,5 kg



**Smoked Rib Brisket**



PORK



105%



MAP



ca. 2,5 kg

# Bacon





# Smithfield



## Dark Smoked Bacon



PORK



85%



VAC



ca. 450g/  
ca. 2 kg



## Roasted Bacon



PORK



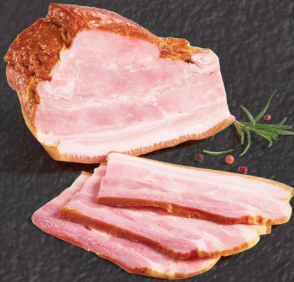
86%



MAP



ca. 1,2 kg



## Light Smoked Bacon



PORK



85%



VAC



ca. 500 g/  
ca. 2 kg



## Cooked Bacon



PORK



85%



VAC



ca. 450 g



## Carski Bacon



PORK



72%



VAC



ca. 700 g/  
ca. 1,5 kg



## Portioned Bacon



PORK



97%



VAC-ROLL



300 g



## Steamed Smoked Bacon



PORK



85%



VAC



ca. 350 g/  
ca. 2 kg

# Sandwich Blocks





**Export Ham  
11 LBS**



PORK



87%



FOIL



4,99 kg



**Ham SOG**



PORK



77%



FOIL



4,99 kg



**Ham SOC**



PORK



77%



FOIL



4,99 kg



**Export Ham**



PORK



87%



FOIL



2,5 kg



**Ham in Block**



PORK



46%



FOIL



ca. 3 kg



**Cooked Pork Ham**



PORK



86%



FOIL



ca.1,5 kg,  
ca.3 kg



**Cooked Chicken**



CHICKEN



84%



VAC



ca. 2,5 kg



PORK



86%



FOIL



ca. 3 kg



**White Ham**



**Krakowska Steamed Sausage**



PORK



66%



VAC



ca. 1,5 kg



TURKEY



53%



POLYAMIDE CASING



570 g



**Cooked Turkey Ham**



**Garlic Sausage**



PORK



57%



VAC



400 g



PORK



60%



MAP



ca. 820 g



**Popular Sausage**



# Smithfield



## Ham Sausage



PORK



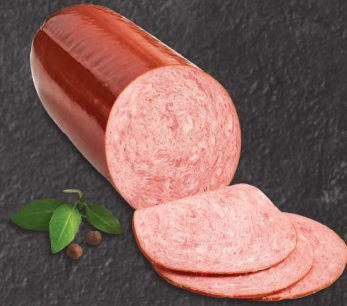
70%



VAC



ca. 2,6 kg



## Luncheon Meat



CHICKEN



44%



POLYAMIDE CASING



800 g/ 1 kg



## Talinska Sausage



PORK



65%



MAP



ca. 800 g



## Family Block with Vegetables



TURKEY, PORK



28%



LUZ



ca. 1,9 kg



## Poultry Pork Mortadela with Paprika



TURKEY, PORK, CHICKEN



62%



POLYAMIDE CASING



450 g



## Poultry Pork Mortadela



TURKEY, PORK



62%



POLYAMIDE CASING



450 g/ ca. 1,8 kg

# Slices and cubes





**Smoked Bacon Diced/Lardons**



PORK



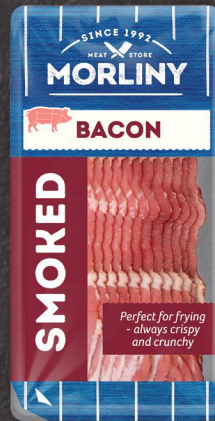
91%/ 96%



MAP  
DUO PACK



150 g/ 200 g/  
450 g/ 600 g/  
800 g



**Smoked Bacon**



PORK



91%/ 96%



MAP



100 g/ 150 g/  
250 g



**Cooked Bacon**



PORK



85%/ 92%



MAP



100 g/ 150 g/  
250 g



**Smoked Pork Loin Sopocka**



PORK



82%



MAP



100 g





**Pork Ham Smoked**



PORK



80%



MAP



250 g



**Pork Ham Cooked**



PORK



75%



MAP



250 g



**Chicken Ham**



CHICKEN



85%



MAP



250 g



**Smoked Pork Ham**



PORK



81%



MAP



250 g



**Roasted Chicken Breast**



CHICKEN



93%



MAP



100 g



**Polish Smoked Farmer's Sausage**



PORK



103%



MAP



100 g





**Cooked Ham Diced**



PORK



83%



MAP  
DUO PACK



150 g - 1,75 kg



PORK



**Cooked Ham in Strips**



91%



MAP



150 g - 2 kg



**Export Ham Sliced**



PORK



87%



VAC



100 g/120 g/  
180 g



# Thin sausages





**White Sausage**



PORK



63%



MAP



ca. 600 g



**Good Sausage**



PORK



86%



MAP



ca. 1,2 kg



**Piska Sausage**



PORK



67%



MAP



ca. 1,2 kg



**Masurian Sausage**



PORK



80%



MAP



520 g



**Silesian Sausage**



PORK



67%



MAP



550 g/ 735 g/  
1,2 kg



**Morlinska Turkey Sausage**



TURKEY



91%



MAP



1,2 kg



**Morlinska Ham Sausage**



PORK



80%



MAP



540 g/  
ca. 1,2 kg



PORK



80%



MAP  
VAC



ca. 500 g/  
520 g/ ca. 1 kg



**Podwawelska Sausage**



**Frankfurters**



PORK



80%



MAP



240 g/  
800 g



PORK



80%



MAP



240 g



**Frankfurters Sweet Jalapeño**



**Silesians**



PORK



90%



MAP



240 g



PORK



80%



MAP



240 g



**Frankfurters Cheese-Tomato**

# Smithfield



**Morlinska Chicken Breast Sausage**



CHICKEN



83%



MAP



400 g/ ca. 1,2 kg



**Podwawelska Sausage**



PORK



93%



VAC - ROLL



520 g



**Classic Sausage**



PORK



80%



MAP



300 g - ca. 3 kg



**Sausage with Cheese**



PORK



73%



MAP



300 g - ca. 3 kg



# Hot-Dogs





**Pork hot-dog**



PORK



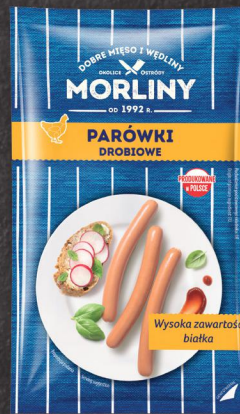
83%



VAC  
MAP



200 g - 1 kg



**Chicken hot-dog**



CHICKEN



63% MSM  
5% CHICKEN



MAP



500 g / 1 kg



**Mini hot-dogs**



PORK



83%



VAC



240 g



PORK



70%



MAP



200 g - 800 g



**Coctail Sausages**



**Vienna Sausage With Cheese**



PORK



73% PORK  
7% CHEDDAR



MAP



350 g - 2,25 kg



**Turkey  
Berlinki**



TURKEY



71%



VAC



250 g



CHICKEN



84%



VAC



250 g



**Chicken  
Berlinki**



**Berlinki  
Classic**



PORK



71%



VAC  
MAP



250 g/ 500 g/  
1500 g



PORK



67%



VAC



250 g



**Berlinki With  
Cheese**



**Berlinki Machos  
à la Kabanos**



PORK



80%



VAC



250 g



PORK



71%



VAC



250 g



**Berlinki  
Pepperoni**





**Berlinki  
Jalapeño**



PORK



71%



VAC



250 g



**Berlinki  
Habanero**



PORK



71%



VAC



250 g



**Berlinki  
wiht Bacon**



PORK



71%



VAC



250 g



**Berlinki  
wiht Chorizo**



PORK



71%



VAC



250 g



# Dry sausages





**Krakowska Dry Sausage**



PORK



146 g of pork and chicken meat/ 100 g



VAC



250 g/ 500 g



**Żywiecka Dry Sausage**



PORK



125%



VAC



230 g/ 460 g



**Hunter's Sausage**



PORK



136%



MAP VAC



270 g/ 360 g/  
1,2 kg



**Krakowska Chicken Sausage**



CHICKEN



120%



VAC

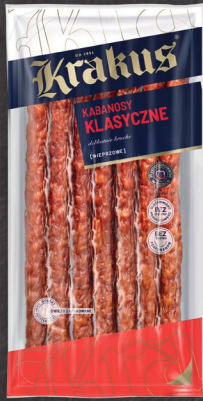


400 g



# Kabanos





**Pork**  
**Kabanos Classic 180 g**



PORK



171 g of pork  
meat/ 100 g



VAC



180 g



**Pork**  
**Kabanos Classic 150 g**



PORK



171 g of pork  
meat/ 100 g



MAP



150 g



**Poultry-Pork**  
**Delicate Kabanos**



POULTRY-  
PORK



160 g of pork and  
chicken meat/ 100 g



MAP



95 g/ 250 g



**Pork**  
**Delicate Kabanos**



PORK



165 g of pork  
meat/ 100 g



MAP



95 g



**Sweet Pepper**  
**Poultry-Pork Delicate Kabanos**



POULTRY-  
PORK



160 g of pork and  
chicken meat/ 100 g



MAP



95 g



**Cheddar Cheese**  
**Poultry-Pork Delicate Kabanos**



POULTRY-  
PORK



160 g of pork and  
chicken meat/ 100 g



MAP



95 g



**Green Onion**

**Poultry-Pork Delicate Kabanos**



POULTRY-  
PORK



160 g of pork and  
chicken meat/ 100 g



MAP



95 g



**Jalapeno**

**Poultry-Pork Delicate Kabanos**



POULTRY-  
PORK



160 g of pork and  
chicken meat/ 100 g



MAP



95 g



**Bacon**

**Poultry-Pork Delicate Kabanos**



POULTRY-  
PORK



160 g of pork and  
chicken meat/ 100 g



MAP



95 g



---

Smithfield

---



# Sous-vide







**Pork Ribs  
with a BBQ Sauce**



PORK



92%



cardboard  
box



550 g



**Chicken Wings**



CHICKEN



90%



cardboard  
box



400 g



**Chicken Leg**



CHICKEN



90%



cardboard  
box



600 g



**Pulled Pork**



PORK



83%



cardboard  
box



550 g



**Goose Breast**



GOOSE



89%



cardboard  
box



ca. 1 kg



**Turkey Leg**



TURKEY



92%



cardboard  
box



ca. 1 kg



**Stuffed Goose**



GOOSE



71%



MAP



ca. 5,4 kg



**Chicken Leg Meat**



CHICKEN



93%



cardboard box



420 g



**Pork Tenderloin with Chanterelles**



PORK



75%



cardboard box



ca. 650 g



**Pork Loin with a Hint of Pepper**



PORK



82%



cardboard box



ca. 500 g



**Chicken Half with a Hint of Smoked Bacon**



CHICKEN



85%



cardboard box



ca. 1 kg



**Ham with Onion**



PORK



78%



cardboard box



ca. 500 g



**Pork Ribs  
with BBQ Sauce**



PORK



82%



cardboard  
box



ca. 600 g



GOOSE



82%



cardboard  
box



420 g

**Goose Stomachs  
in Horseradish Sauce**



---

ANIMEX

---

# Convenience





**Chicken Nuggets**



CHICKEN



51%



MAP  
FLOW PACK



350 g/ 1 kg/  
2,5 kg



**Chicken Nuggets Cheddar**



CHICKEN



46% CHICKEN



MAP  
FLOW PACK



350 g/ 1 kg/  
2,5 kg



**Chicken Nuggets Spinach & Zucchini**



CHICKEN



42% VEGETABLES  
29% CHICKEN



MAP  
FLOW PACK



300 g/ 1 kg/  
2,5 kg



**Chicken Nuggets Beetroot & Pumpkin**



CHICKEN



36% VEGETABLES  
32% CHICKEN



MAP  
FLOW PACK



300 g/ 1 kg/  
2,5 kg



**Chicken Mini Fillet**



CHICKEN



64%



MAP  
FLOW PACK



350 g/ 1 kg/  
2,5 kg



**Chicken Goujon**



CHICKEN



64%



MAP  
FLOW PACK



305g/ 1 kg/  
2,5 kg



**Crispy Chicken Wings**



CHICKEN



91%



MAP  
FLOW PACK



350 g/ 1 kg/  
2,5 g



**Chicken Wings Roasted**



CHICKEN



117 g of chicken  
meat/ 100 g



MAP  
FLOW PACK



350 g/ 1 kg/  
2,5 kg



**Chicken Wings Spicy**



CHICKEN



117 g of chicken  
meat/ 100 g



MAP  
FLOW PACK



350 g/ 1 kg/  
2,5 kg



**Chicken burger**



CHICKEN



52%



MAP  
FLOW PACK



400 g/ 1 kg/  
2,5 kg



**Chicken burger with Cheddar**



CHICKEN



54%



MAP  
FLOW PACK



400 g/ 1 kg/  
2,5 kg



**Chicken Kebab**



CHICKEN



113 g of chicken  
meat/ 100 g



MAP  
FLOW PACK



350 g/ 400 g/  
1 kg/ 2,5 kg

Smithfield



Chipotle Wings



CHICKEN



96%



MAP



350 g



# Vegetarian products







### Veggers



VEGAN



MAP



170 g



### Vegger Burger



VEGAN



MAP



170 g

# Canned products





Ham



PORK  
(light ham  
meats)



80%



CAN



455 g



English  
Goulash



PORK



95%



CAN



300 g



Pork Bacon



PORK



81%



CAN



300 g



Pork Knuckle



PORK



89%



CAN



300 g





**Pork Goulash**



PORK



94%



CAN



300 g



**Luncheon Meat Extra**



PORK



94%



CAN



300 g



**Pork in Own Sauce**



PORK



94%



CAN



300 g



**Luncheon Meat**



PORK



91%



CAN



400 g

---

Smithfield

---



# Food service





**Pork Hot-Dog**



PORK



52%



VAC



700 g



**Pork Chilli Hot-Dog**



PORK



66%



VAC



700 g



**Pork Kabanos**



PORK



72%



VAC



700 g



**Pork Mega Hot-Dog**



PORK



65%



VAC



770 g



**Pork Kabanos Mega**



PORK



75%



VAC



1,54 kg



**Pizza Ham Sliced**



PORK



51%



VAC-ROLL



1 kg



**Cooked Ham**



PORK



69%



SHRINK BAG



5 kg



**Salami Pepperoni Sliced**



PORK



94%



VAC



1 kg



**Cooked & Smoked Sliced Bacon**



PORK



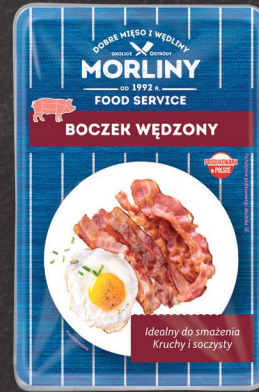
85%



VAC



1 kg



**Smoked Sliced Bacon**



PORK



85%



VAC



1 kg



**Smoked Sliced Streaky Bacon on Paper Sheets**



PORK



96%



VAC



1,38 kg



**Bacon Diced/Lardon**



PORK



91%



MAP



800 g





**Mild Kebab  
Chicken Leg Meat**



CHICKEN



100 g of chicken  
meat/ 100 g



BAG



2,5 kg



**Spicy Kebab  
Chicken Leg Meat**



CHICKEN



112 g of chicken  
meat/ 100 g



BAG



2,5 kg



**Kebab Chicken  
Fillet**



CHICKEN



112 g of chicken  
meat/ 100 g



BAG



2,5 kg



**Breaded Chicken  
Innerfillets**



CHICKEN



65%



BAG



1 kg



**Chopped and Shaped  
Chicken Meat**



CHICKEN



65%



BAG



1 kg



**Chicken Fillet  
Roasted Slices**



CHICKEN



104 g of chicken  
meat/ 100 g



BAG



1 kg



**Breaded Chicken Wings**



CHICKEN



91 g of chicken wings/ 100 g



BAG



1 kg



**Mild Chicken Strips**



CHICKEN



69%



BAG



1 kg



**Spicy Chicken Strips**



CHICKEN



69%



BAG



1 kg



**Roasted H&S Chicken Wings**



CHICKEN



102 g of chicken wings/ 100 g



BAG



2,5 kg



**Mild Chicken Tulips**



CHICKEN



124 g of chicken meat/ 100 g



BAG



1 kg



**Spicy Chicken Tulips**



CHICKEN



124 g of chicken meat/ 100 g



BAG



1 kg



ANIMEX

**ANIMEX FOODS Sp. z o.o.**

Chałubińskiego 8 St., 00-613 Warsaw, Poland

[www.animex.pl](http://www.animex.pl)

[www.smithfield.pl](http://www.smithfield.pl)